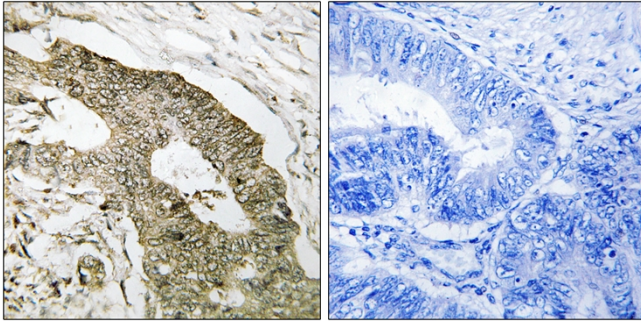




NUCKS Polyclonal Antibody

Catalog No	YP-Ab-01922
Isotype	IgG
Reactivity	Human;Mouse;Rat
Applications	IHC;IF;ELISA
Gene Name	NUCKS1
Protein Name	Nuclear ubiquitous casein and cyclin-dependent kinase substrate 1
Immunogen	The antiserum was produced against synthesized peptide derived from human NUCKS1. AA range:28-77
Specificity	NUCKS Polyclonal Antibody detects endogenous levels of NUCKS protein.
Formulation	Liquid in PBS containing 50% glycerol, 0.5% BSA and 0.02% sodium azide.
Source	Polyclonal, Rabbit,IgG
Purification	The antibody was affinity-purified from rabbit antiserum by affinity-chromatography using epitope-specific immunogen.
Dilution	IHC: 1/100 - 1/300. ELISA: 1/10000.. IF 1:50-200
Concentration	1 mg/ml
Purity	≥90%
Storage Stability	-20°C/1 year
Synonyms	NUCKS1; NUCKS; JC7; Nuclear ubiquitous casein and cyclin-dependent kinase substrate 1; P1
Observed Band	
Cell Pathway	Nucleus . Chromosome .
Tissue Specificity	Widely expressed, with highest levels in thyroid gland, prostate and uterus and in fetal liver, thymus and lung.
Function	PTM:Phosphorylated by CDK1 and casein kinase. Phosphorylated upon DNA damage, probably by ATM or ATR.,sequence caution:Translated as Arg.,
Background	This gene encodes a nuclear protein that is highly conserved in vertebrates. The conserved regions of the protein contain several consensus phosphorylation sites for casein kinase II and cyclin-dependent kinases, two putative nuclear localization signals, and a basic DNA-binding domain. It is phosphorylated in vivo by Cdk1 during mitosis of the cell cycle. [provided by RefSeq, Aug 2010],
matters needing attention	Avoid repeated freezing and thawing!
Usage suggestions	This product can be used in immunological reaction related experiments. For more information, please consult technical personnel.

Products Images



Immunohistochemistry analysis of paraffin-embedded human colon carcinoma tissue, using NUCKS1 Antibody. The picture on the right is blocked with the synthesized peptide.